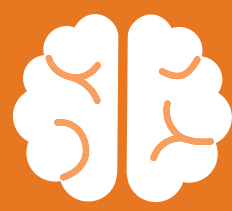


Staying ahead of the BIG 3 health concerns?

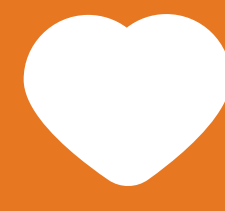
Cancer, Stroke, and Heart Attack are the leading health concerns in the Philippines.
(Philippine Statistics Authority)



8.1% of the Filipino mortality rate was due to cancer-related deaths.



Cerebrovascular diseases that lead to stroke affect 9.7% of Filipinos.



Heart-related diseases amount to 18.3% of the Philippines' total deaths.

The most common types of cancer include:



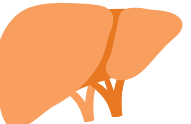
Breast Cancer



Lung Cancer



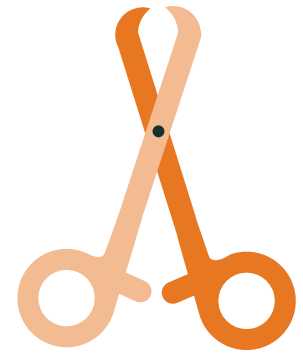
Prostate Cancer



Liver Cancer



Our national healthcare system only covers **Php 38,000** of expenses on stroke-related cases.



Coronary Artery Bypass is the common treatment for heart attacks that starts at **Php 400,000**.



The starting cost for treating each cancer is **Php 120,000**.



The cost of stroke is up to **Php 2.93 million** in hospital fees.



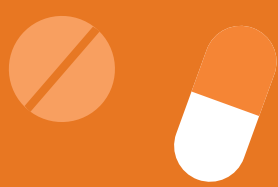
The cost of treating myocardial infarction could amount to **Php 1.92 million**.⁽¹⁾

(Philippine Statistics Authority)



Start with BIG Protection at minimum cost!

FWD BIG 3 Critical Illness Insurance is easy on the pocket, easy to purchase, and easy to claim. This policy covers you from the BIG 3 health concerns: early to late stage cancer, stroke, and heart attack. The best part is you can purchase it within minutes via shop.fwd.com.ph.



Now is the time to be one step ahead of our health!

Scan the code to learn more.



Sources:

(1) As of 2018 according to Business Mirror
[The Health Insurance Gap In The Philippines](#)
[Bird's Eye View: Cancer in the Philippines](#)
[The Catastrophic Costs of Cancer Treatment](#)

[Philippine Cancer Control Program](#)
[Cost of Cancer Treatment in Philippine Hospitals](#)
[Current State of Stroke Care in the Philippines](#)
[Philippine Heart Center Treatment Packages](#)