

FWD Set for Life

Investment-linked Insurance

Investments

Retirement

Premium Waiver



Upgrade your life

- ✓ Stay protected with life coverage until age 100
- ✓ Grow your wealth in a diverse selection of global and local funds
- ✓ Receive a non-guaranteed Loyalty Bonus invested directly into your investment account on the 10th year of your policy, and every 5 years after
- ✓ Get an Accidental Death Benefit should you pass away due to an accident, receive 3x the amount if it happens on a holiday

Your aspirations deserve priority

Life is abundant with possibilities that excite you, whether you're working on broad strokes for the future or a crystal clear goal. While you care for your loved ones, it's important to nurture these ambitions because it's part of taking care of yourself. With a reliable support system that values your needs, you're free to choose and pursue both – made even better with investments that may reward you over time through FWD Set for Life Investment-linked Insurance.

You know your needs and goals best, that's why FWD Set for Life gives you the freedom to design your support system based on your lifestyle, financial goals, and aspirations. Customize your policy and find the right balance of protection and investment – your own recipe for celebrating the many flavors of life, from whatever stage you're at to wherever your passion takes you.



Benefits at a Glance

FWD Set for Life comes with a wide range of protection benefits and investment options. Set the amount of protection you need from a variety of add-ons or choose to go all-in and choose among diverse investment funds best suited for your risk appetite and financial journey.



Life protection up to age 100

Should you pass away, your beneficiary will receive 100% of the Benefit Amount, the account value, or the minimum death benefit whichever is higher.



Investment Options

Have the opportunity to grow your wealth in global and local funds over time. FWD has a diverse selection of funds suited for different risk appetites, empowering you to protect your assets and fulfill your goals.



Loyalty Bonus

Get a non-guaranteed cash reward on the 10th year of your policy, recurring thereafter every five years as long as the policy has not been reinstated.



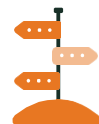
Accidental Death Benefit

Get an additional cash benefit upon death due to an accident. Receive 3x the accidental death benefit if the accident happens on a covered Philippine holiday.



Waiver of Premium

We'll pay your premiums once you're diagnosed with a major critical illness or permanent disability so you can focus on your health and recovery.



Flexible payment options

Choose from a payment period of 5 years or 10 years.



Supercharged
2-in-1 app

Use Omne by FWD to access your Set for Life Plan. Manage your policy, make payments and claims, and more to achieve real-life goals!



FI chatbot

Inquire, book an appointment, and more with our chatbot, FI at fwd.com.ph

Looking for an extra layer of assurance for your insurance?

Mix and match policy add-ons for enhanced protection benefits suited to your needs.



LifePro Life Insurance Add-on

Receive additional cash benefit:

- Upon death or terminal illness
- Should the insured pass away anywhere in the world
- Should the insured and his/her spouse pass away in the same accident, the surviving minor child will receive 2x the death benefit.
- Plus, get advance payment for funeral services within 48 hours upon receipt of death certificate.



RecoveryPro Hospital Cash Benefit Add-on

Gives a cash benefit for every day you are hospitalized to help with your bills. Receive 2x of the Benefit Amount if you are admitted to the Intensive Care Unit.



HealthPro Multiple Critical Illness Add-on

Receive additional cash benefit:

- Upon death
- Up to 3x claims upon diagnosis of the covered 42 major critical illnesses, including cancer, heart attack, and stroke
- One time when diagnosed with any of the 15 minor critical illnesses, including early-stage cancer, severe osteoporosis, and angioplasty



HealthPro Lite Critical Illness Add-on

- Receive a one-time cash benefit upon diagnosis of the covered 42 major critical illnesses, including cancer, heart attack, and stroke.
- Advance a portion of the benefit if diagnosed with any of the 15 minor critical illnesses, including early-stage cancer, severe osteoporosis, and angioplasty.

Choose a Set for Life Bundle that fits your needs and goals!

Babyproof

Our first-ever life insurance bundle designed just for babies. Protect your kid's future with baby insurance and set them up for great success!

Family Hero

Best-suited for OFW families, this is a protection and investment package that features benefits that can cater to the needs of every family member at home.

Health Bundle

The package that understands how it's crucial to have all your bases covered: life coverage, investment, critical illness coverage, and a hospital cash benefit so you can build your health and wealth!

How does FWD Set for Life work?



Cindy's Story: The Millennial Go-Getter

Age 28



Cindy works as a customer service representative by day and an online seller by night. She is a breadwinner, so she understands that being insured will protect her finances, and prepare her for the future.

She wants to invest her extra income from being a BPO employee and online seller, so she purchased FWD Set for Life Investment-linked Insurance, and placed her investment in an aggressive equity fund.

- 5-year pay with Php 63,489 annual premium
- Benefit Amount: Php 600,000

Age 31



Cindy hustled hard and soon her online business grew exponentially. One day she collapsed after work. Doctors later diagnosed it as a heart attack.

Fortunately, FWD Set for Life has a Waiver of Premium, so she doesn't have to pay any future premiums and just focuses on recovery.

Age 34



While Cindy was on her way home from work, she met Arthur, her childhood crush. They spoke for months, which turned into a beautiful, exciting relationship. Eventually, they got married and had a son.

She later updated her beneficiaries from her parents to her husband and son.

How does FWD Set for Life work?



Cindy's Story: The Millennial Go-Getter

Age 37



It's her policy's 10th anniversary so Cindy is rewarded with a Loyalty Bonus invested in her account. Her account value grows to Php 411,738 following an 8% annual fund growth rate.

Age 42



After five years, Cindy receives another Loyalty Bonus.

Her son topped his class and they celebrate by going on a family trip to Hong Kong. She withdraws Php 50,000 from her account for pocket money. She's happy she still has Php 559,079* after withdrawal.

Age 47



Cindy receives another Loyalty Bonus after 5 years. She withdraws Php 200,000 for the downpayment of her dream car, which leaves Php 618,036* in her account.

Age 65



On the night of Good Friday, Cindy and her family were driving home from an out-of-town trip when they got into a car collision. The family survived the accident, but unfortunately, Cindy suffered multiple critical injuries and did not make it.

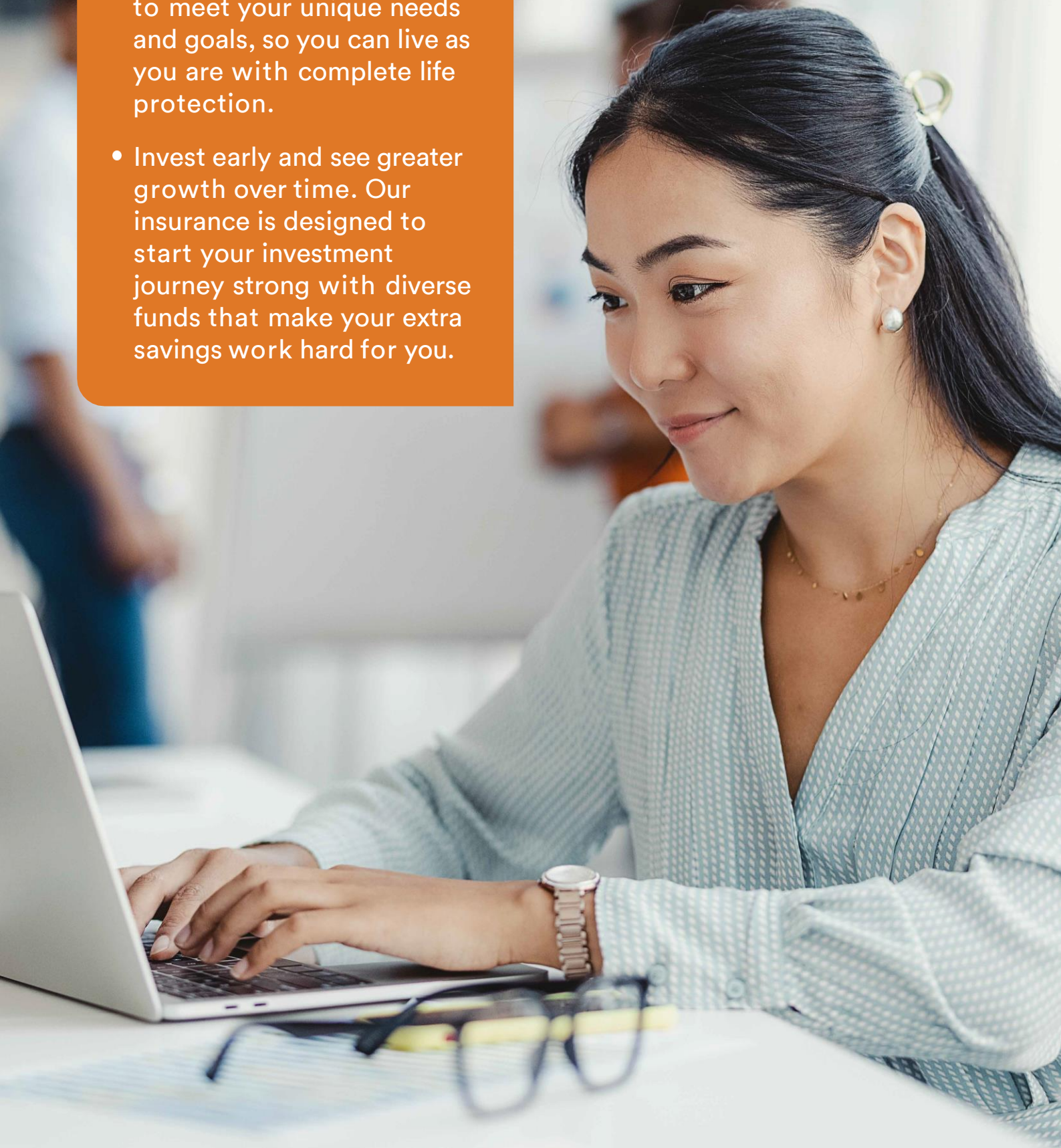
Cindy lived a full and fruitful life. She excelled in her career and entrepreneurial endeavors and nurtured a loving family. Because she prepared for the future, her family was taken care of and received a total of Php 4,394,330 from FWD:

- Php 2,594,330* from her account value
- Php 600,000 as her additional Accidental Death Benefit, and since it happened on a Philippine holiday, FWD gives her 3x the amount equivalent to Php 1,800,000.

*Assuming 8% fund growth rate

Why start today?

- FWD Set for Life is customizable with add-ons to meet your unique needs and goals, so you can live as you are with complete life protection.
- Invest early and see greater growth over time. Our insurance is designed to start your investment journey strong with diverse funds that make your extra savings work hard for you.



Frequently Asked Questions

1. What is Set for Life?

Set for Life is an investment-linked insurance product that provides both financial protection from death, and an investment platform to fulfill your long-term goals.

2. How long is the insurance protection provided by Set for Life?

Set for Life covers an insured person until age 100. The insurance protection will continue for as long as the account value is sufficient to pay for the policy charges.

3. Who can avail or purchase Set for Life? Who can be covered by it?

Any individual who is 18 years old up to 99 years old can purchase Set for Life as the policy owner. An individual who is at least 15 days old up to 70 years old can be insured under the policy.

4. What are the benefits provided by SFL?

If you avail of FWD Set for Life, you will enjoy the following benefits:

- **Death Benefit** – if in the unfortunate instance that the insured individual dies, the beneficiaries will receive the Death Benefit equal to whichever is higher among (a) Benefit Amount of the Policy; (b) minimum Death Benefit and (c) the account value of the policy.
- **Account Value** – potentially grows your wealth as a portion of the premiums you pay is invested in your choice of FWD's professionally managed funds. The account value of your policy changes depending on the performance of the economy.
- **Loyalty Bonus** – on the 10th year of the policy and every 5 years thereafter, two percent (2%) of the average account value for the past sixty (60) months will be added to the policy's account value. However, you will not be entitled to this benefit if the policy has lapsed and was reinstated.
- **Accidental Death Benefit** – if the cause of death is due to an accident, the beneficiaries will receive a benefit amount equal to the Benefit Amount in addition to the Death Benefit. If the death happens to be on a Public Holiday in the Philippines, this Benefit Amount is tripled. This benefit is bundled for 5-pay and 10-pay plans.
- **Waiver of Premium** – during the premium payment period, if the insured person is permanently disabled or is diagnosed with one of the 42 critical illnesses or if the owner is not the same as the insured person and dies, all future premiums of the policy will be waived. This benefit is bundled for 5-pay and 10-pay plans.

5. Can Set for Life provide additional benefits?

Yes! You can boost your protection with these add-ons:

Frequently Asked Questions

- **LifePro** – Additional Benefit Amount is paid if the insured person dies or suffers a terminal illness
- **HealthPro / HealthPro Lite** – if the insured person is diagnosed with one of the covered major or minor critical illnesses, the insured will receive the designated benefit amount.
- **SafetyPro** – if the cause of death is due to an accident, the beneficiaries will receive a benefit amount equal to the Benefit Amount in addition to the Death Benefit. If the death happens to be on a Public Holiday in the Philippines, this Benefit Amount is tripled. This benefit can be added to the 7-pay plan.
- **RecoveryPro** – if the insured person is hospitalized for at least three (3) days, we will pay an amount per day of hospitalization.

6. What are the payment arrangements allowed for Set For Life?

You can choose from a payment period of 5 years or 10 years. If you're interested in a 7-year pay plan, you may reach out to an FWD financial advisor. You can also choose how frequently your premiums will be due: Annually, Semi-Annually, Quarterly, or Monthly.

7. Is there a minimum annual premium to avail Set For Life?

Yes. It's Php 50,000 for 5-year pay and Php 30,000 for 10-year pay.

8. What kind of funds can I invest in?

Depending on your risk appetite, you may invest in the following: equity, balanced or bond funds.

- Equity funds are high risk and the most volatile. This fund is for customers who are aggressive in their investments who will accept the risk for potential higher returns.
- Bond funds are for low-risk investors who prefer conservative returns from securities.
- Balanced funds are for moderate investors because it invests in both equity and bond funds.

To know more about FWD Peso funds, visit: <https://investment.fwd.com.ph/>

9. What are the charges in this product?

The charges for FWD Set For Life are the following:

- **Premium charge** - This charge works like a subscription charge and is deducted from the premium before it gets invested in your chosen fund.

Frequently Asked Questions

- **Fund management charge** - This charge will be used to cover the expenses related to maintaining your investment. This is already incorporated in the computation of your account value.
- **Insurance charge** - This charge will be deducted every month from your account value to support your life insurance coverage.

10. Can I subscribe for more units to maximize my investment?

Yes. For as low as Php 5,000, you can increase your account value by purchasing units via top-up. When you top up on your policy, your basic Benefit Amount also increases by 125% of the top-up amount. Top-up transactions are subject to a 5% premium charge.

11. Can I get a portion of the account value during the policy?

Yes. You can partially withdraw a portion of the policy's account value with a minimum of Php 5,000. However, the remaining account value should be at least Php 10,000.

When you withdraw some of the account value, your basic Benefit Amount will decrease by 125% of the Partial Withdrawal amount.

About FWD Philippines

FWD Life Insurance Corporation (FWD Philippines) launched its commercial operations in September 2014. Currently, FWD Philippines is number one in customer experience among insurers in the country¹. In just 10 years, FWD Philippines now ranks 3rd and 4th in terms of new business annual premium equivalent² and premium income³, respectively.

FWD Philippines is part of FWD Group, a pan-Asian life insurance business with more than 13 million customers across 10 markets, including some of the fastest-growing insurance markets in the world. FWD Group was established in 2013 and is focused on changing the way people feel about insurance. FWD's customer-led and digitally enabled approach aims to deliver innovative propositions, easy-to-understand products, and a simpler insurance experience.

FWD Philippines is regulated by the Insurance Commission of the Philippines and is legally permitted to provide insurance products and services within the country.

For more information, please visit fwd.com.ph.

¹ Based on KPMG's Global Customer Experience Excellence Report 2023

² www.insurance.gov.ph > Data > Statistics > Life Insurance Companies > 2023 > Based on New Business Annual Premium Equivalent

³ www.insurance.gov.ph > Data > Statistics > Life Insurance Companies > 2023 > Based on Premium Income

We're here for you, 24/7.

For concerns and inquiries, you can reach us any time:



Chat: fwd.com.ph



Email: customerconnect.ph@fwd.com



Call: +632 8888 8388



Manage your policy with Omne by FWD or Customer Portal

Learn more about
FWD's consumer
protection commitment:



FWD Life Insurance Corporation
19/F W Fifth Avenue Building,
5th Avenue corner 32nd Street, Bonifacio
Global City, Taguig City, 1634 Philippines

Insurance Commission | insurance.gov.ph
1071 United Nations Avenue,
Ermita, Manila, 1000

Email: publicassistance@insurance.gov.ph
Call: (02) 8-523-8461 local 103/127



[fwdlife.ph](https://www.facebook.com/fwdlife.ph)



[fwdlife_ph](https://www.instagram.com/fwdlife_ph)



[fwdlife_ph](https://twitter.com/fwdlife_ph)



[fwdlifeph](https://www.youtube.com/fwdlifeph)